

# STC800

## STC800 TRUCK CRANE 80 TONS LIFTING CAPACITY

21. 12. 2003

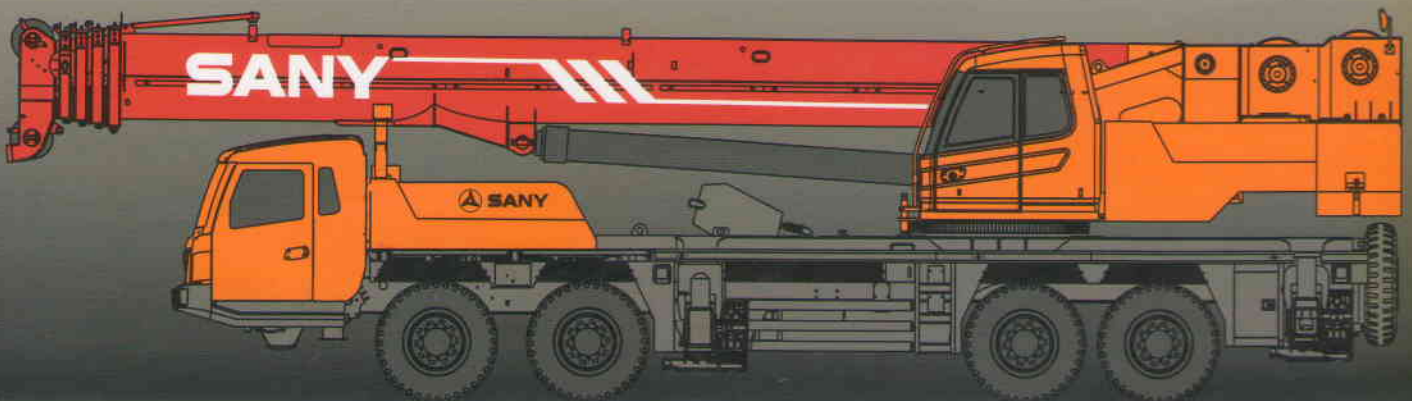
<b>MAX. CAPACITY</b> (Outriggers) - 80 Tonnes at 3m Radius (75% Rating) 360° Slew
--

<b>BOOM</b> - 5 SECTION U shaped 11.8m - 45.0m
--

<b>MAX. ROAD SPEED</b> - 80 km/hr
-----------------------------------

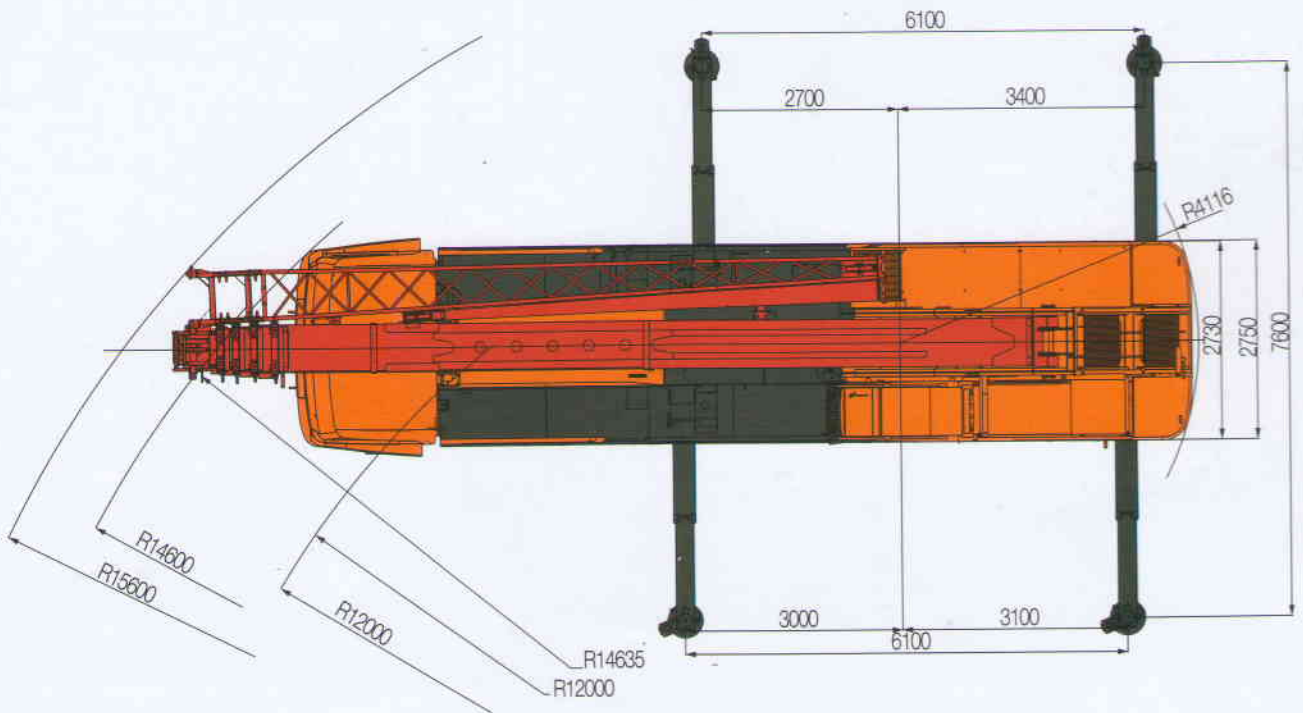
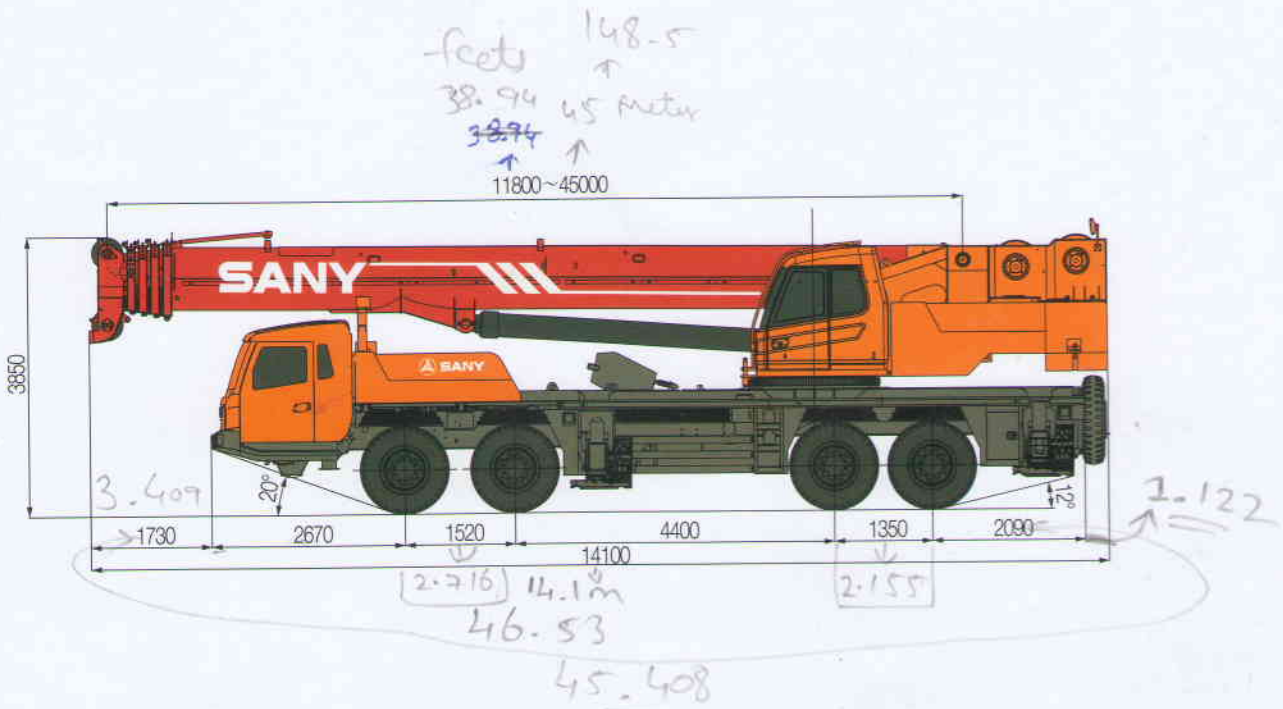
<b>CARRIER</b> - 8x4 Drive
----------------------------

<b>COUNTERWEIGHT</b> - 6.5T
-----------------------------



# SANY

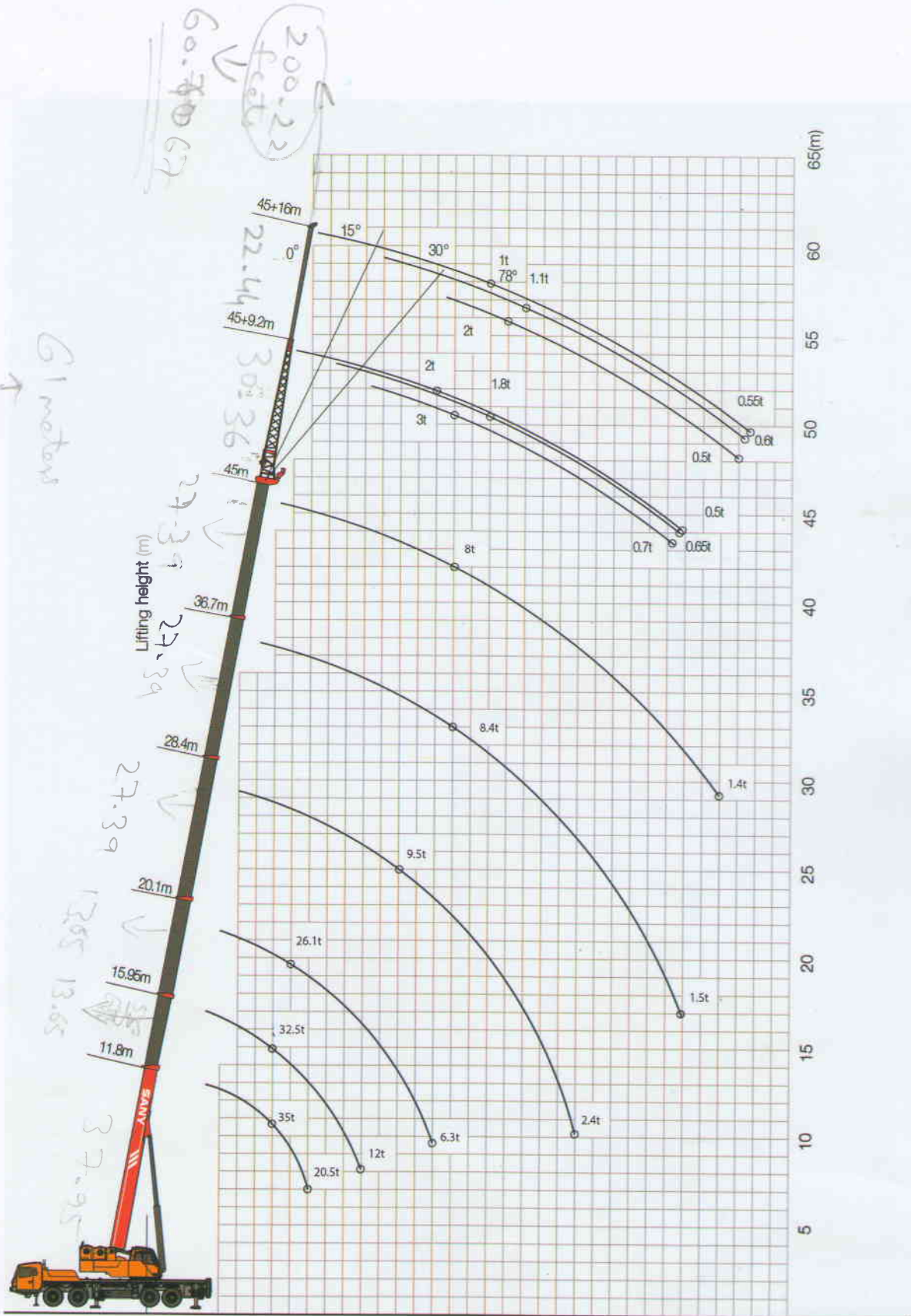
Quality Changes the World



**STC800 TRUCK CRANE**  
**PRODUCT SPECIFICATIONS**

Type	Item	Parameter	
Capacity	Max. lifting capacity	80t	
Dimensions	Overall length	14100 mm	
	Overall width	2750 mm	
	Overall height	3850 mm	
	Axle distance	Axle-1,2	1520 mm
Axle-2,3		4400 mm	
Axle-3,4		1350 mm	
Weight	Overall weight	46000 kg	
	Axle load	Axle load-1,2	20000 kg
		Axle load-3,4	26000 kg
	Rated power	275 kW/2100 rpm	
Rated torque	1550 N.m/1200 rpm		
Traveling	Max.traveling speed	80 km/h	
	Turning radius	Min.turning radius	12 m
		Min.turning radius of boom head	15.6 m
	Wheel formula	8 × 4	
	Min.ground clearance	230 mm	
	Approach angle	20 °	
	Departure angle	12 °	
	Max.gradeability	37%	
Fuel consumption per 100km	≤ 55 L		
Main Performance Data	Temperature range	- 30 °C ~ +60 °C	
	Min.rated range	3 m	
	Tail slewing radius of swingtable	4.116 m	
	Boom section	5	
	Boom shape	U-shaped	
	Max.lifting moment	Base boom	2560.2 kN·m
		Full-extend boom	1254.4 kN·m
		Full-extend boom+jib	414.9 kN·m
	Boom length	Base boom	11.8 m
		Full-extend boom	45.0 m
Full-extend boom+jib		61 m	
Outrigger span (Longitudinal×Transversal)	6.1 × 7.6 m		
Jib offset	0 °, 15 °, 30 °		
Working speed	Max.single rope lifting speed of main winch (no load)	130 m/min	
	Max.single rope lifting speed of auxiliary winch (no load)	130 m/min	
	Full extension/retraction time of boom	120 / 130 s	
	Full lifting/descending time of boom	80 / 80 s	
	Slewing speed	2.0 r/min	
Aircondition	Aircondition in up cab	Cooling and Heating	
	Aircondition in low cab	Cooling and Heating	

**STC800 Working Ranges**



**STC800 TRUCK CRANE  
LOAD CHART**

Unit:kg

**Prerequisites:**

- ① Boom operating conditions(fully extended boom length),min.length is 11.8m and max.length is 45m
- ② The span of outriggers is 6.1m×7.6m
- ③ 360°rotation is applied
- ④ Counterweight is 6.5T

Working range(m)	Main boom						Working range(m)	
	11.8m	15.95m	20.1m	28.4m	36.7m	45m		
3	80000	54000	43000	30000			3	
3.5	71000	54000	43000	29000			3.5	
4	63000	51000	43000	27000	30000	16000	4	
4.5	56000	48000	40900	25000	30000	16000	4.5	
5	51000	45000	38000	23000	30000	16000	5	
5.5	47500	42000	35400	21000	29000	15500	5.5	
6	43000	39000	33100	20000	27500	15000	6	
6.5	39000	36000	31100	18200	26000	15000	6.5	
7	35000	32500	28500	16200	25000	14000	7	
8	26500	26200	26100	13000	22000	13000	8	
9	20500	21500	21000	10000	20000	12500	9	
10		17500	17500	9000	17000	11500	10	
11		14300	14500	8000	14500	9600	11	
12		12000	12300	7600	12500	8500	12	
13			10100	7200	11500	7500	13	
14			9000	6800	9500	7000	14	
15			7400	6500	8700	6500	15	
16			6300	6000	7200	6000	16	
18					5200	5500	18	
20					4100	5000	20	
22					3100	4200	22	
24					2400	3800	24	
26							26	
28							28	
30							30	
32							32	
Number of lines	12	9	9		6	5	3	Number of lines
<b>Telescoping condition(%)</b>								
I	0%	50%	100%	0%	100%	0%	100%	I
II	0%	0%	0%	33%	33%	66%	66%	100%