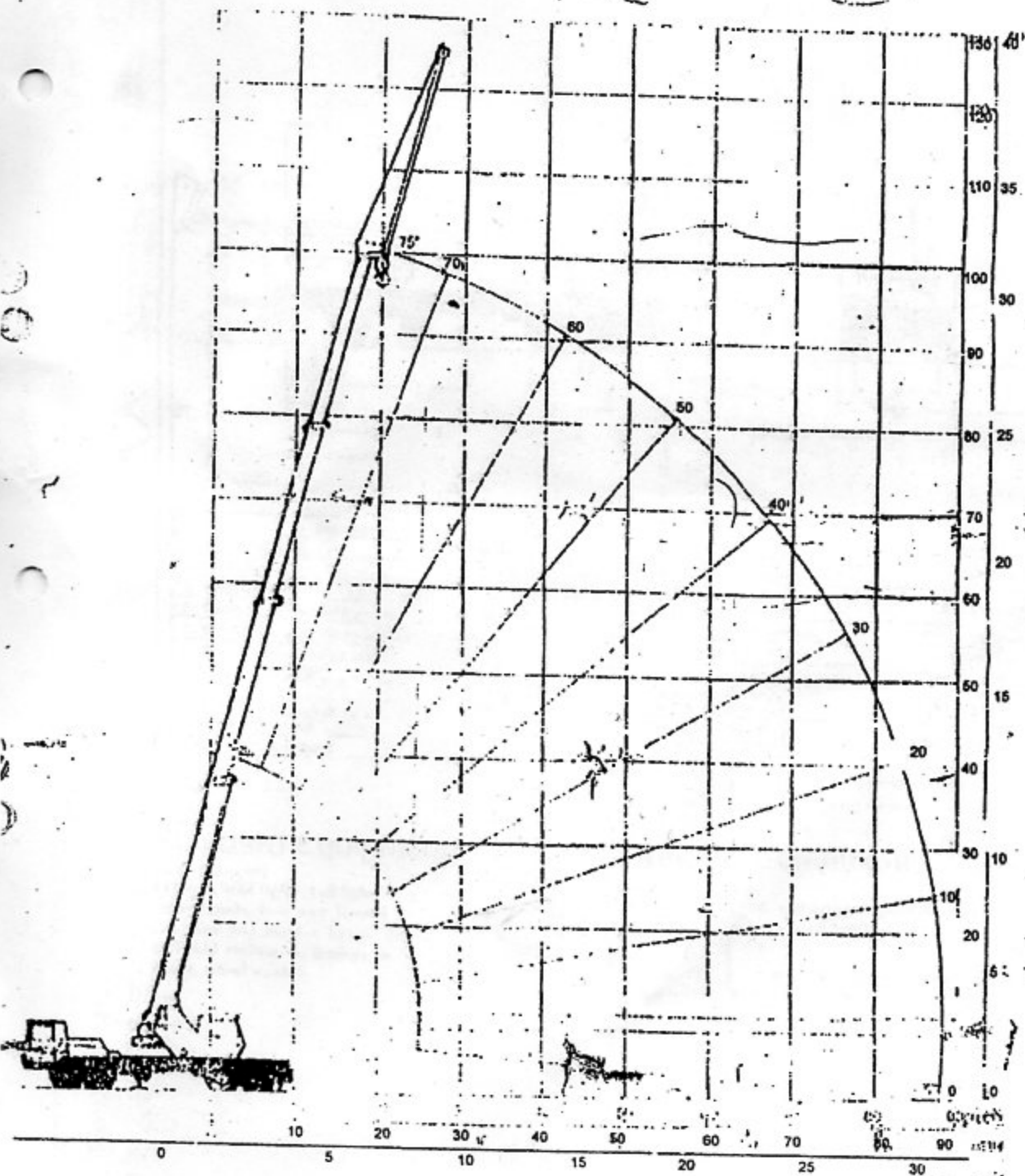


# BANTAM T-788

telekrane

## RANGE DIAGRAM

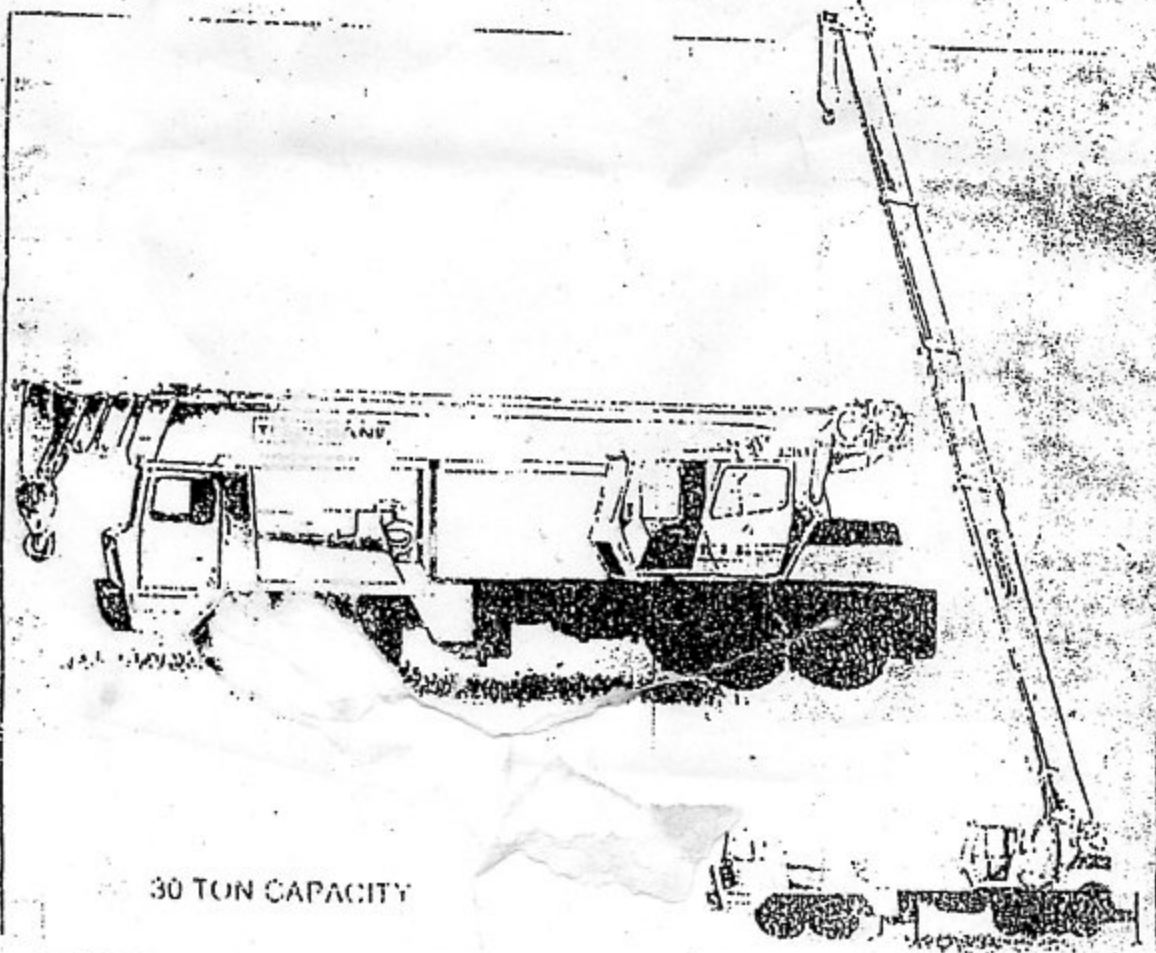




# BANTAM T-788

telekrane

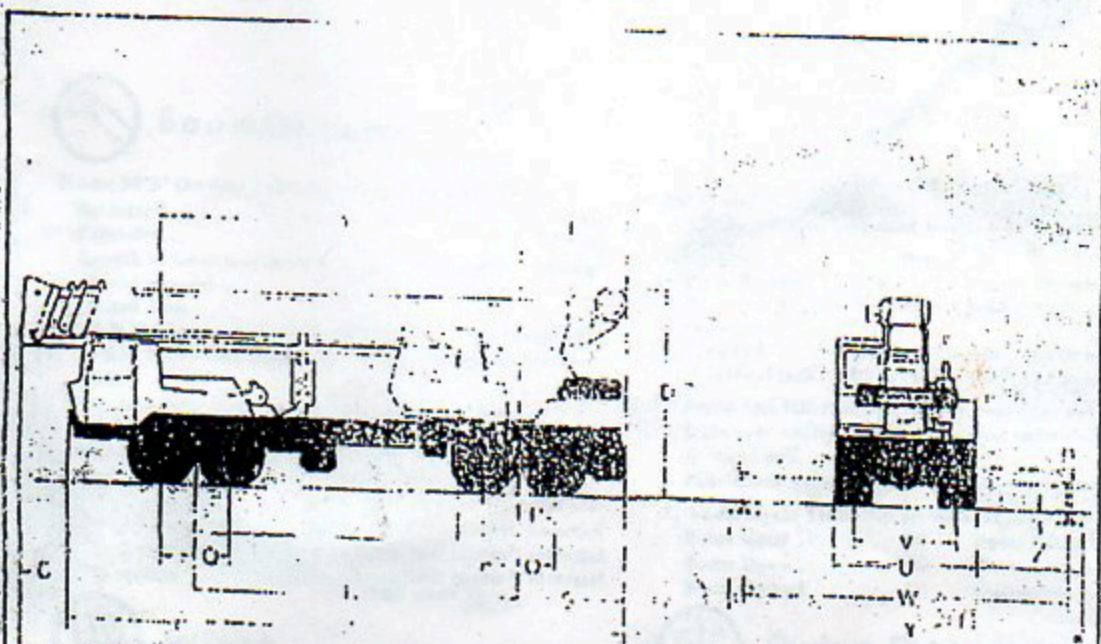
STRONG ON  
PERFORMANCE



30 TON CAPACITY



# BASIC MACHINE DIAGRAM



Description	Dimensions
A Overall length	30' 0" (9144 mm)
B Tail swing	9' 6" (2927 mm)
C Boom overhang	2' 0" (610 mm)
D Overall height over auxiliary boom	11' 0" (3353 mm)
E Distance from center of rear axle to center of boom	11' 0" (3353 mm)
F Distance from center of rear axle to rear end of boom	11' 0" (3353 mm)
G Overall length of boom	11' 0" (3353 mm)
H Overall length of chassis	11' 0" (3353 mm)

Description	Dimensions
Maximum overall width with retracted booms (2200 lbs removed)	8' 0" (2438 mm)
Maximum overall width with retracted booms (2200 lbs extended)	9' 2" (2800 mm)
Track on top of 2nd rear axle	5' 11 1/2" (1573 mm)
Track on top of 4th rear axle	5' 11 1/2" (1573 mm)
Track on top of 6th rear axle	5' 11 1/2" (1573 mm)
Track on top of 8th rear axle	5' 11 1/2" (1573 mm)
Track on top of 10th rear axle	5' 11 1/2" (1573 mm)
Track on top of 12th rear axle	5' 11 1/2" (1573 mm)
Track on top of 14th rear axle	5' 11 1/2" (1573 mm)
Track on top of 16th rear axle	5' 11 1/2" (1573 mm)
Track on top of 18th rear axle	5' 11 1/2" (1573 mm)
Track on top of 20th rear axle	5' 11 1/2" (1573 mm)
Track on top of 22nd rear axle	5' 11 1/2" (1573 mm)
Track on top of 24th rear axle	5' 11 1/2" (1573 mm)
Track on top of 26th rear axle	5' 11 1/2" (1573 mm)
Track on top of 28th rear axle	5' 11 1/2" (1573 mm)
Track on top of 30th rear axle	5' 11 1/2" (1573 mm)

## Standard Equipment

- Carrier (Lower)
- Fenders, head lights, tail lights
- Turn signals, four way hazard flashers
- Clearance and marker lights
- Anti-skid surface on fenders
- Hooks, wheel wrench

## Optional Equipment

- Power door
- Water, dust, and dirt protection glass, head lights, tail lights
- Anti-skid surface on fenders
- Anti-skid surface on chassis
- Anti-skid surface on boom
- Anti-skid surface on chassis
- Anti-skid surface on boom
- Anti-skid surface on chassis
- Anti-skid surface on boom



# BANTAM T-788

## specifications



### Boom Options

**Boom:** 93' 9" (28.6m) 1 Section (optional 2 Section)

**Retracted** ..... 2.4m  
**Extended** ..... 93.9m

Length of boom measured to center of hook. 10' (3.0m) of lead sheaves.

**Optional Jibs:**  
 20 ft (6.2m) extending to 120 ft (36.6m) - 40,000 psi (2.75 N/mm<sup>2</sup>) material, pin-on, stop-way, carried under main boom.

**Boom functions:** Four section full power, smooth, web extending and retracting with single control lever. Top and intermediate sections travel on rollers.

**Boom construction:** All welded, box beam.

**Flange boom** ..... 60,000 psi (4.14 N/mm<sup>2</sup>) material  
**Single section** ..... 100,000 psi (6.89 N/mm<sup>2</sup>) material  
**Third section** ..... 100,000 psi (6.89 N/mm<sup>2</sup>) material  
**Top section** ..... 100,000 psi (6.89 N/mm<sup>2</sup>) material



### Winch

**Main Winch:**  
**Bantam Model 162—Equal Speed**

**Performance:**  
 Max. line speeds (no load) ..... 300 fpm (91.44 m/min)  
 Max. line pull ..... 16,650 lb (7547 kg)

**Dimensions:**  
 Drum diameter ..... 24.0 in (610 mm)  
 Drum length ..... 24.0 in (610 mm)  
 Flange diameter ..... 48.0 in (1219 mm)

**Wire Rope:**  
 Type ..... 6x19  
 Dimensions ..... 1.25 in (31.8 mm) dia.

**Optional Auxiliary Winch:**  
**Bantam Model 162—Equal Speed**

**Performance:**  
 Max. line speed (no load) ..... 300 fpm (91.44 m/min)  
 Max. line pull ..... 16,650 lb (7547 kg)

**Dimensions:**  
 Drum diameter ..... 24.0 in (610 mm)  
 Drum length ..... 24.0 in (610 mm)  
 Flange diameter ..... 48.0 in (1219 mm)

**Wire Rope:**  
 Type ..... 6x19  
 Dimensions ..... 1.25 in (31.8 mm) dia.



### Hydraulic System

**Hydraulic Pump:** 10 GPM (37.8 L/min)  
 An actuated mechanical pump controlled from operator's cab.

**Outriggers:** 2 mounted forward of machine platform  
 2 mounted rearward of machine platform

**Outrigger:** 22.0 in (558.8 mm) dia. x 17.50 in (444.5 mm) height

**Outrigger vertical jacks:** 5.00 in (127.0 mm) dia. x 17.50 in (444.5 mm) height

Right and left side controls for outrigger extend function. Outrigger vertical jacks controlled individually. Controls in operator's cab.

Filter check valves on all load carrying cylinders.

**Cylinder Cycle Times (in seconds, at rated pressure):**

Boom Hoist	40	Boom Retract	35
Boom Down	40	Outriggers Ret	40
Boom Extend	50	Outriggers Extend	20



### Swing System

**Swing Speed (no load):** 3 rpm

**Operation:** Double planetary reduction unit powered by a hydraulic motor.

**Swing Bearing:** Ball bearing swing base with precision cutting gear. Bearing bolted to carrier frame and rotating with frame.

**Swing Brake:** Heavy duty, disc-type mechanical brake, lever actuated from operator's cab. Brake locks upper machinery at any degree of rotation.



### Cab

Equipped with a 22" top structure. Full vision with glass on front, side and rear with a full 180° view. Front window is 24" x 48" (610 x 1219 mm). Right hand window is 24" x 48" (610 x 1219 mm) and closed position. Three position sliding door. 11" x 11" (279 x 279 mm) glass covered front panel.



### Carrier

Carrier Model 162 (162) x 162



### Power Unit

Power Unit Model 162 (162) x 162

## [PCSA STD., AND (KG)]

Over Side or Rear - on Outriggers

Boom length - ft (m)

Radnis

ft (m)	30.25 (9.36)	45.50 (14.18)	62.25 (19.00)	80.00 (23.80)	93.75 (28.60)
12 (3.65)	60 000 (30 000)	52 500			
15 (4.57)	46 000 (20 300)	44 000 (20 000)	38 000 (11 250)		
20 (6.10)	33 000 (13 000)	33 000 (15 000)	33 000 (15 000)	23 500 (10 700)	
25 (7.62)	25 000 (11 350)	25 000 (11 350)	25 000 (11 350)	19 500 (8 860)	17 000 (7 800)
30 (9.14)		20 000 (9 100)	20 000 (9 100)	17 000 (7 800)	11 000 (5 000)
35 (10.57)		16 200 (7 350)	16 200 (7 350)	14 500 (6 600)	10 000 (4 550)
40 (12.19)		12 500 (5 700)	12 500 (5 700)	12 500 (5 700)	8 900 (4 050)
50 (15.24)			8 000 (3 650)	8 000 (3 650)	7 100 (3 250)
60 (18.28)				5 500 (2 500)	5 600 (2 550)
70 (21.34)				3 600 (1 600)	3 600 (1 600)
80 (24.39)					2 600 (1 200)
98 (25.82)					1 900 (8 60)

Capacities in shaded areas are based on Strength of Machine Capacities below shaded areas do not exceed 85% of tipping

Jib rating with Outrigger Over Side or Rear  
Pounds (Kilograms)

Jab length	25 (7.62 m) Jab		32 (9.75 m) Jab	
Offset Boom Angle	0	30	0	30
75	6 000 (2720)	3 500 (1590)	3 500 (1590)	2 800 (1270)
70	3 000 (2270)	3 000 (1360)	3 000 (1360)	2 400 (1090)
60	3 000 (1360)	2 000 (910)	2 000 (910)	1 700 (770)
45	2 000 (910)	1 500 (680)	1 500 (680)	1 250 (570)
30	1 200 (540)	1 000 (450)	1 000 (450)	8 50 (350)