

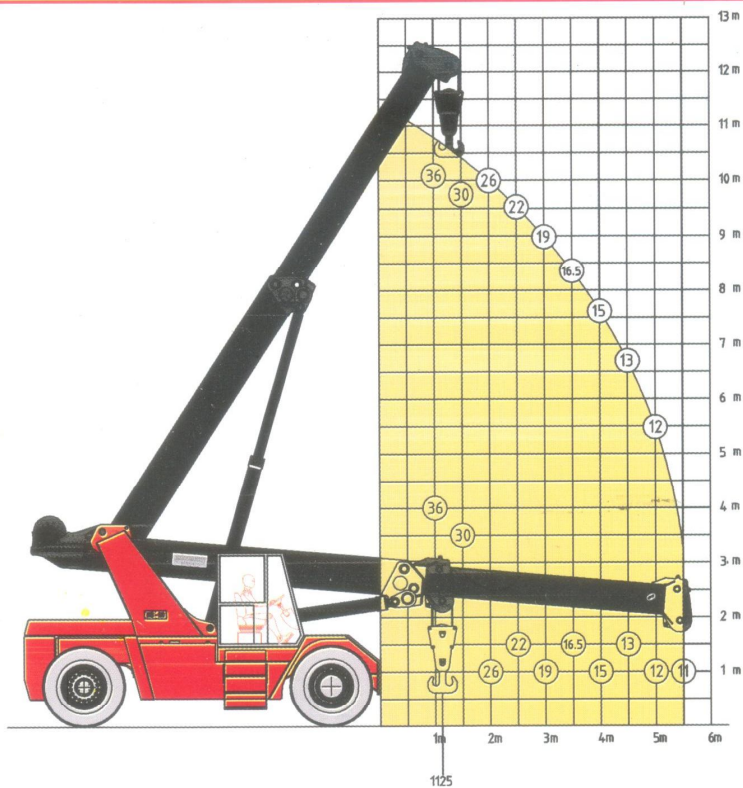
Carpiotec

**MOBILE CRANE
HC - 36**

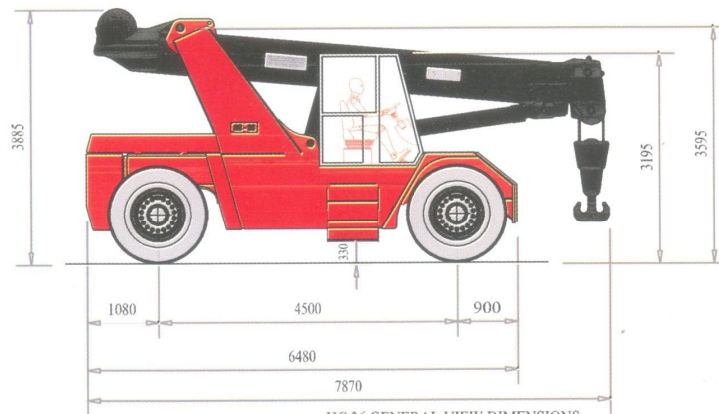


SPECIFICATIONS

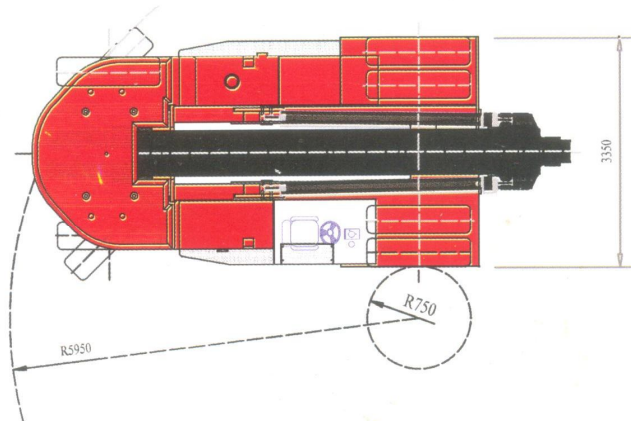
Lift Capacity		kg	36000
Load Centre		mm	1125
Driving Speed(Laden/Unladen)		km / h	20 / 30
Lifting Speed (Laden/Unladen)		m / sec	0.260 / 0.28
Lowering Speed(Laden/Unladen)		m / sec	0.28 / 0.30
Gross Vehicle Weight (Laden/Unladen)		Kgs	76840 / 40840
Static Weight on Front Axle (Laden/Unladen)		Kgs	61150 / 15150
Static Weight on Rear Axle (Laden/Unladen)		Kgs	12990 / 25840
Stability		%	31
Gradeability (Laden/Unladen)		%	25 / 45
Tyres,Front/Rear			16.00 x 25, 32PR
Battery		V/AH	24 / 180 x 2
Engine:	Make		Cummins Volvo
	Model		QBTAA5.9C TAD 720VE
	Rating Speed	HR / RPM	235 / 2500 237/2300
	No. of Cylinders		6
	Aspiration		Turbo Charged / Intercooled
	Displacement	L	5.7
	Bore xStroke	mm	98 x 126
	Cooling		Water cooled
Transmission:	Make		ZF
	Model		3WG 171 191
	Type		Power Shift with Torque Converter
	Speeds F/R		3 / 3
Drive Axle:	Make		OMCI (Italy)
	Type		Full Floating with Planetary Hub reduction
	Brakes		Wet Disc
	Reduction		01:24.8
	Static Capacity	t	110
Dimensions:	Front Over Hang	mm	900
	Wheel Base	mm	4500
	Rear Over Hang	mm	1077
	Overall Length	mm	7870
	Overall Height	mm	3885
	Turning Circle Radius	mm	5950
Winch:	Drive		Hydraulic Motor
	Reduction Type		Planetary Gear Box
	Brakes		Multiple Disc - Wet type spring actuated, Hydraulically released
	Line Pull		6 Tons at 1st Layer
	Rope Dia	mm	19
	Rope length	m	120m (2nd stage)
	No. of falls		6
	Single Line speed	m / min	50
Service Data:	Diesel Tank	L	550
	Hydraulic	L	600
	Engine Crank Case	L	21
	Transmission	L	34
	Drive Axle		
	i) Differential	L	62
	ii) Hub reduction	L	1.5 + 1.5



HC 36 - LOAD CHART



HC 36 GENERAL VIEW DIMENSIONS



MOBILE CRANE HC - 36

