



GROVE[®]
MANLIFT[®]

A GROVE WORLDWIDE COMPANY

AMZ131XT

Self-Propelled Aerial Work Platform



Grove Manlift expands the boundaries of self propelled aerial work platforms with the AMZ131XT! Major features include:

- Unique 3-dimensional articulating boom design.
- Working height of 131 ft. (39.9m).
- Maximum horizontal reach of 69 ft. (21.2m).
- Maximum up and over height of 61 ft. 9 in. (18.8m).
- Standard four-wheel drive and steer.
- Hydraulically extendable axles.

The **AMZ131XT's** 3-dimensional boom design allows access to an incredible **6,275 ft.² (583m²)** of working area without time consuming machine relocation. The result...increased productivity and reduced costs.

Hydraulically extendable axles provide a solid base that let you access a wide range of elevated work sites. With the axles in the retracted position, the **AMZ131XT** maintains a compact width for ease of transport.

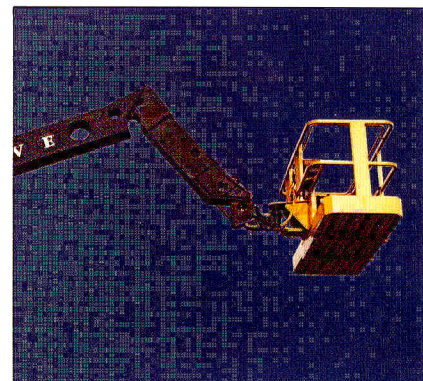
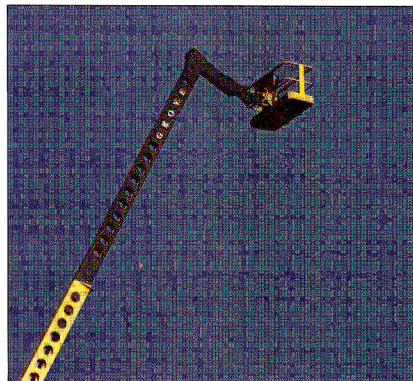
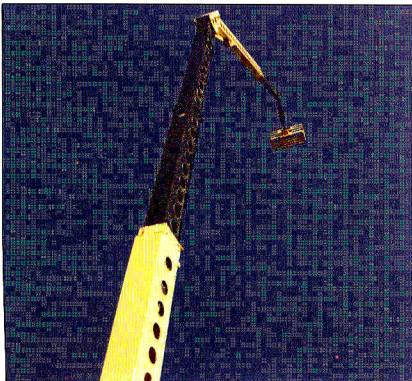
The **AMZ131XT's** unsurpassed reach, performance and specifications make it ideal for applications such as petrochemical, bridge work, airports or any application that requires maximum reach and performance.

Standard Equipment

PLATFORM

All-welded 36 x 72 in. (0.91 x 1.83m) tubular aluminum work platform assembly with inside handrails, sliding bar gate and 180° hydraulic platform rotator. 44 in. (1.12m) high railings with mid-rails and 6 in. (0.15m) toeboard.

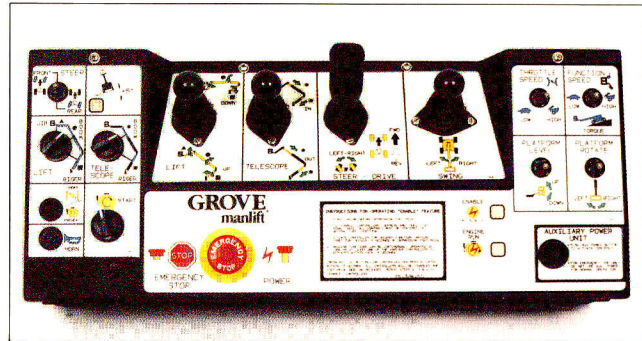
110-volt AC wiring with plug and junction box on the turntable and two outlets on the platform, 15 amp resettable circuit breaker, and GFI (ground fault interrupter).



GETTING TO 131 FT. (39.9M) - The telescoping riser (left), main boom (center) and articulating jib (right) combine to provide unparalleled three-dimensional up, and over and down reach for a machine of this size.

CONTROLS

Proportional controllers with adjustable "ramp-to-zero" for drive, lift, telescope and swing. Non-proportional control switches for platform level and platform rotation; and rocker switch mounted on the drive controller for thumb steer. Selection switches for boom/riser/jib lift, boom/riser telescope, high/low engine idle and function speed (low/torque/high). Control enable system* with engine run indicator light and foot pedal. Five degree tilt indicator light (LED). Push buttons for auxiliary power, engine start, choke, emergency stop and horn.



User-friendly controls feature color coded symbols with written descriptions for easy function identification.

Lower control panel features non-proportional control switches for lift, telescope, swing, platform level and platform rotate and mast level override. Selection switches for lower/upper control, boom/riser/jib lift, boom/riser telescope, axle/boom function selection and auxiliary power. Voltmeter, hourmeter, and ignition switch. Green LED indicating axles are pin locked.

Electric motor and gear pump driven off the starter batteries provides auxiliary power. Controllable from both control stations.

Lockable battery disconnect switch.

RISER/BOOM/JIB

All-steel 3-section Vierendeel-embossed trapezoidal riser** with integrally pinned self-leveling mast. Telescoping mid and fly sections extend by a 2-stage double acting cylinder with integral load holding valve.

All-steel 2-section Vierendeel-embossed V-trap boom with articulating jib attached to fly section. Telescoping fly section extends by a double acting cylinder with integral load holding valve.

8 ft. (2.44m) articulating jib section is an all-steel mechanical parallelogram which provides +5° to -90° of articulating reach relative to the main boom.

Telescoping riser and boom sections supported by adjustable low-friction wear pads.

Internal power guides in both the riser and boom route hydraulic and electric lines to the platform.

Double-acting lift cylinders with integral load holding valves provide riser, boom and jib elevation.

Ball bearing swing circle with 360° continuous rotation. Hydraulically driven Grove planetary gear box. Automatic spring applied, hydraulically released disc brakes. Plunger type mechanical house lock.

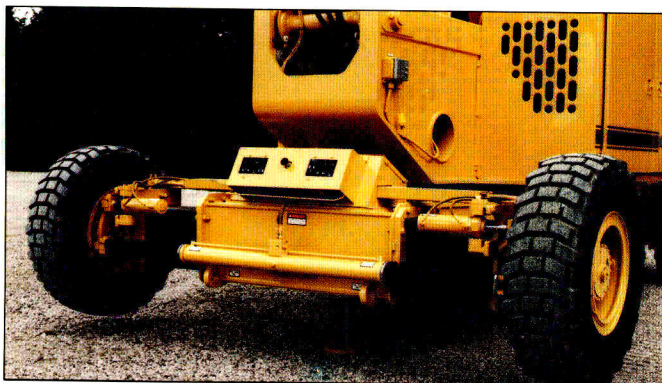
HYDRAULIC SYSTEM

Pressure/flow compensated, variable displacement axial piston pump with 43 gpm (162.8 lpm) capacity. Maximum system operating pressure of 3,700 psi (259 bar).

Electrically activated consolidated valve bank provides simultaneous function capability.

10 micron hydraulic pressure and return filters.

100 gal. (378 liter) steel, strap-mounted hydraulic reservoir with integral sight level gauge and magnetic plugs.



POWER PLANT

Ford CSG-649 6-cylinder water cooled engine with 110 hp (82 kw) @ 2,500 rpm.

60 amp alternator.

2 x 12-volt DC negative ground batteries connected in series with 750 CCA @ 0° F (-17° C).

45 gal. (170 liter) steel fuel tank with sight gauge.

CHASSIS

Hydraulically extendable front and rear axles with automatic locking cylinders**. Hydraulic jacks on the front and rear raise the chassis for axle extension/retraction.

Four-wheel, two speed planetary drive hubs on the front and rear wheels. Rotary flow dividers provide differential traction.

Dual counterbalance valve provides dynamic braking. Automatic spring-applied hydraulically released disc type parking brakes on all four drive wheels.

Four wheel crab and coordinated steering.

Tilt alarm, all motion alarm.

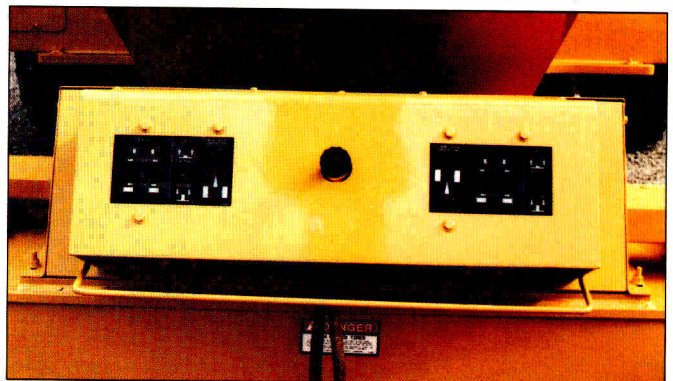
Lifting and tie down lugs.

Options (consult price list for all available options)

- Ford CSG-649 dual/fuel engine.
- Cummins 4BT3.9 4-cylinder turbo charged water cooled diesel with 100 hp (75 kw) @ 2,500 rpm.
- 96 in. (2.44m) platform (500 lbs. capacity).
- 2000 watt 110V AC generator.
- Air power to platform.
- Weld leads to platform.
- Oxygen/acetylene lines to platform.
- Hostile Environment Protection Package.

* Patented Grove feature

** Patent pending



Hydraulically extended axles can be set up in under 2 minutes by one man with no manual pinning required. Dual hydraulic jacks lift the chassis (left) for axle extension/retraction. All axle function controls are in one location (right) for convenient operation.

Specifications

AMZ131XT

Platform

Working Height 131 ft. (39.9m)
Platform Height 125 ft. (38.1m)
Riser Height:
Retracted 34 ft. 4 in. (10.5m)
Extended 61 ft. 9 in. (18.8m)
Horizontal Reach:
Riser Retracted 69 ft. (21.2m)
Riser Extended 61 ft. 9 in. (18.8m)
Platform Capacity 600 lbs. (272 kg)

Dimensions

Platform Size 36 x 72 in. (0.92 x 1.83m)
Overall Height (stowed) 9 ft. 9 1/2 in. (2.98m)
Overall Length 39 ft. 3 1/2 in. (11.98m)
Overall Width:
Axles Retracted 8 ft. 6 in. (2.6m)
Axles Extended 12 ft. (3.7m)
Turning Radius (inside):
Axles Retracted 15 ft. 3 in. (4.6m)
Axles Extended 14 ft. 6 in. (4.4m)
Turning Radius (outside):
Axles Retracted 24 ft. 11 in. (7.6m)
Axles Extended 28 ft. 6 in. (8.7m)

Wheel base 14 ft. (4.27m)
Tailswing (beyond tires):
Riser Extended 3 ft. 8 in. (1.1m)
Riser Retracted Zero

Performance

Maximum Drive Speed 2.5 mph (4.0 km/h)
Gradeability (theoretical) 50%
Tires 13.00R20 Foam Filled
Swing Speed 0.5 RPM

Power Source

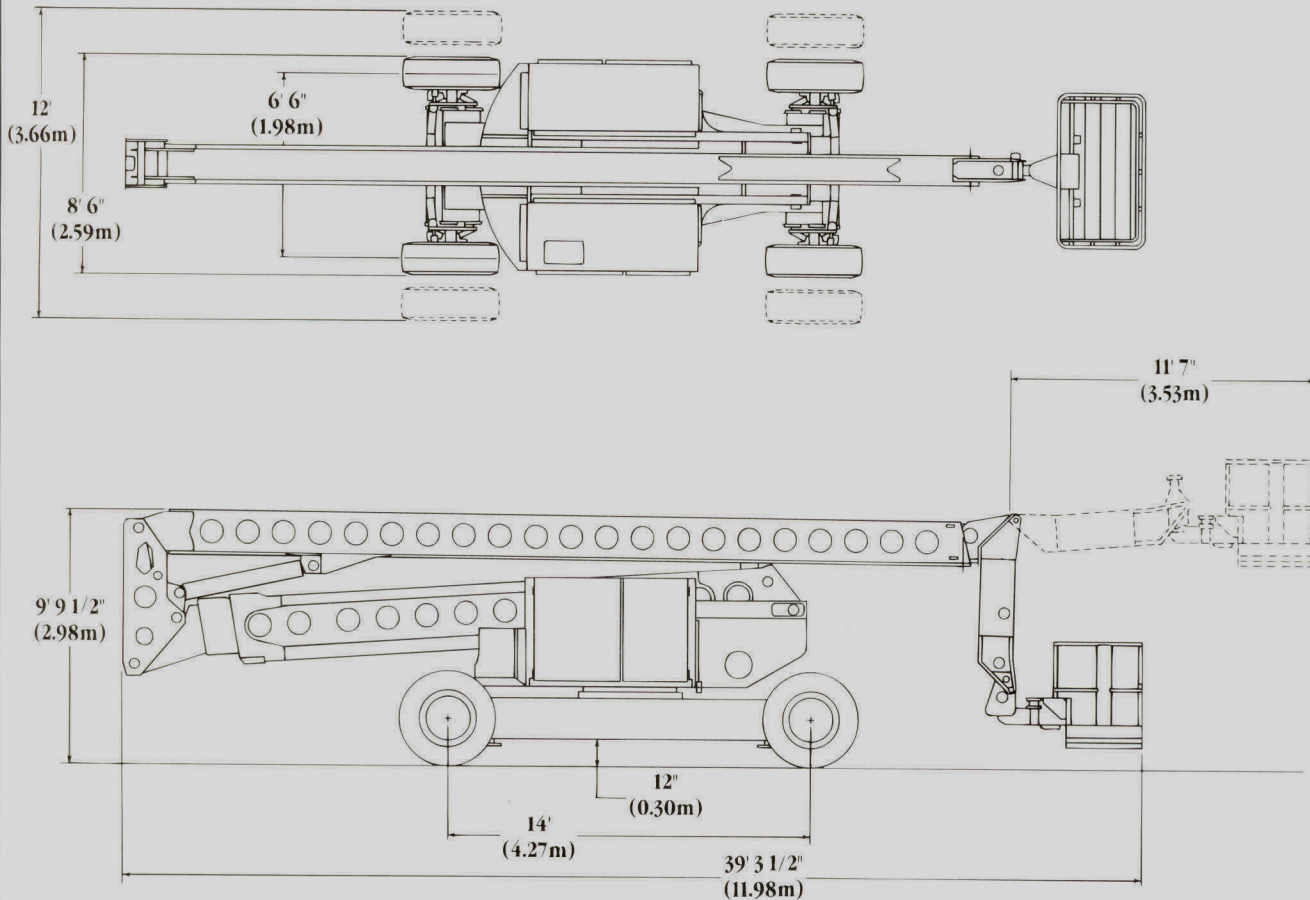
Engine Make/Model Ford CSG-649
Engine Horsepower 110 hp (82 kw)
Fuel Tank Capacity 45 gallons (170 liters)

Hydraulics

Reservoir Capacity 100 gallons (378 liters)
Hydraulic Pump Type Axial Piston
Auxiliary Power Yes

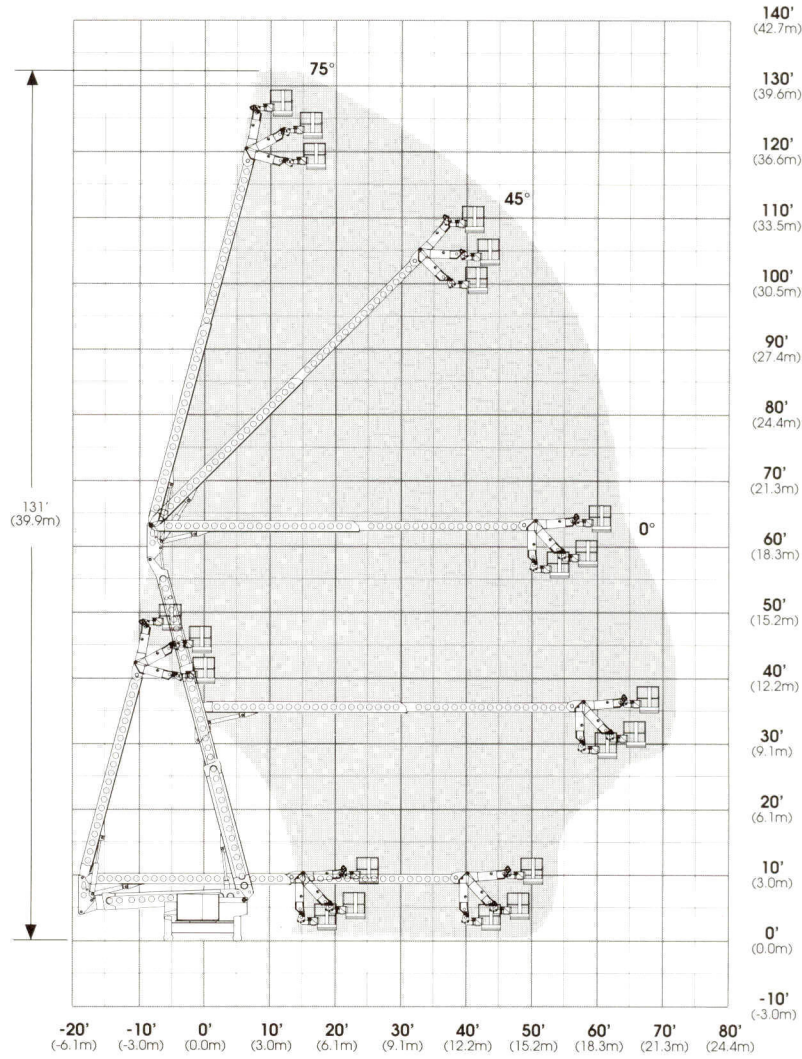
Shipping Information

Weight 47,700 lbs. (21637 kg)
Shipping Cube 3,274 cu. ft. (92.7m³)



Range Diagram

AMZ131XT



Standard four-wheel drive and steering provide outstanding traction and maneuverability in rough terrain.



The Grove Manlift . . .

PRODUCT PROTECTION PLAN

12 MONTHS
PARTS
WARRANTY

12 MONTHS
LABOR
WARRANTY

84 MONTHS
STRUCTURAL
WARRANTY

Now there's another reason to choose Grove Manlift aerial work platforms! It's the Grove Manlift Product Protection Plan! Under this plan, all new Grove Manlift aerial work platforms are warranted to be free from defects in material and workmanship for *one full year*. All structural components, including booms, riser, masts, turntables, frames and scissors arms, are covered for *six additional years!** Only Grove Manlift has the confidence -- and the equipment -- to make an offer this good.

*See manufacturer's warranty for any limitations or restrictions which may apply.

**The strongest warranty in the industry . . . for the
strongest line in the industry!**



Grove Worldwide - World Headquarters
1565 Buchanan Trail East
Shady Grove, Pennsylvania 17256
Phone: (717) 597-8121 Fax: (717) 597-4062

Grove North America
P. O. Box 21, Shady Grove, Pennsylvania 17256
Western Hemisphere, Asia/Pacific
Phone: (717) 597-8121 Fax: (717) 597-4062

Grove Europe*
Sunderland, England SR4 6TT
Europe, Africa, Middle East, Near East
Phone: (0191) 565-6281 Fax: (0191) 564-0442

* Grove Europe Limited, Registered in England, Number 1845128, Registered office, Crown Works, Pallion, Sunderland, Tyne & Wear, England SR4 6TT.

Constant improvement and engineering progress make it necessary that we reserve the right to make specification, equipment, and price changes without notice. Illustrations shown may include optional equipment and accessories and may not include all standard equipment. This work platform meets the requirements, to the extent applicable, of US-DOL OSHA regulations and ANSI A92 standards in effect on the date of manufacture.

Distributed By: